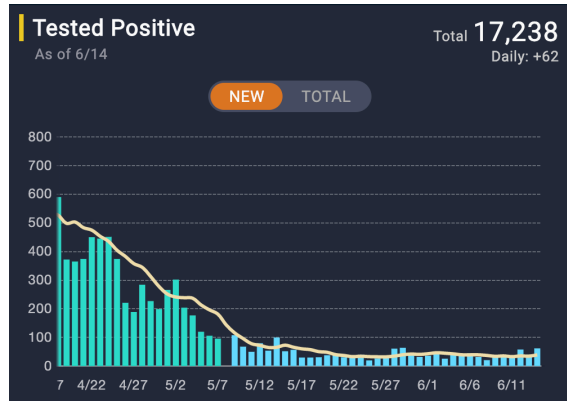


Situation report – COVID19; Japan, Tuesday 16th of June 2020

Confidential – for internal circulation only, not for release to outside parties without the prior consent of the author. This document represents the opinion of the author and does not constitute the provision of medical care. Readers with concerns over their individual health should contact their physician for advice.

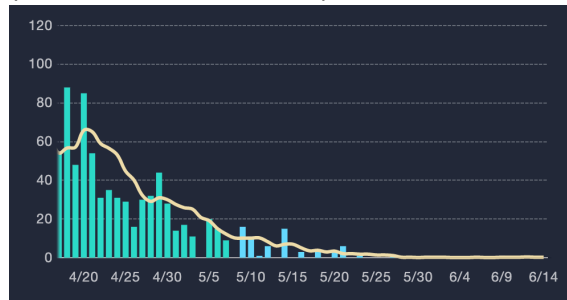
Current Situation in Japan

(National)



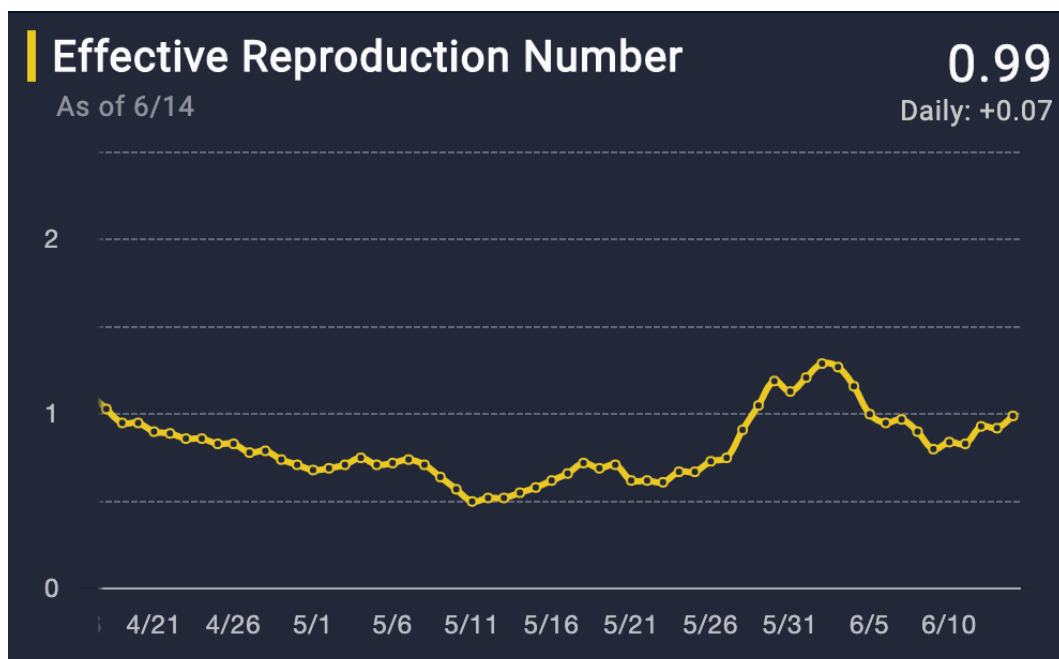
Case numbers remain low. Much of the country is now either entirely free of COVID19 cases or is experiencing only very occasional sporadic infections. Osaka (population 19 million) has had only two new cases this month, with similar figures duplicated across the Kansai region. Many rural prefectures have been entirely free of infection for several weeks.

(Case numbers in Osaka)



Ongoing spread of infection in clusters is still occurring in several parts of Japan, though, including Hokkaido, Fukuoka and the Kanto region (Tokyo and its surrounding prefectures of Chiba, Saitama and Kanagawa).

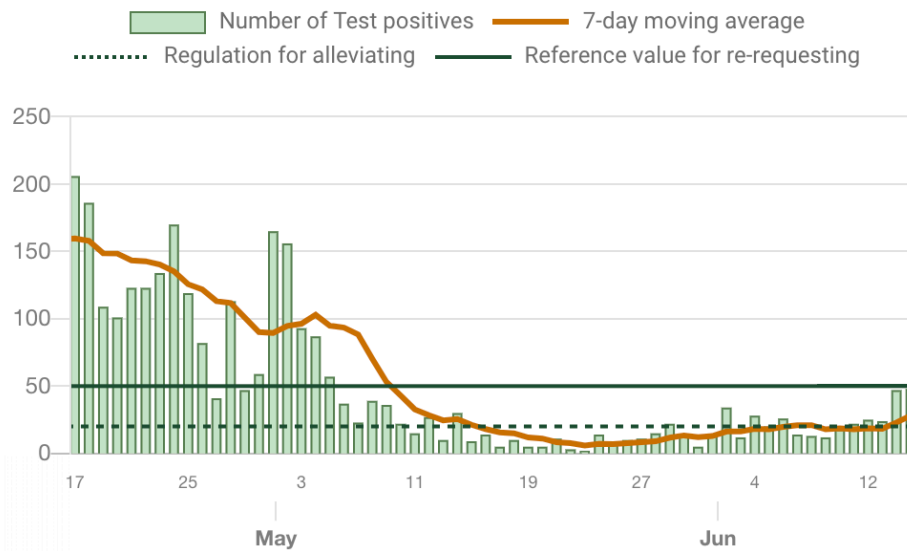
The effective reproduction number for the country as a whole remains very close to 1, suggesting that if ongoing clusters of infection can be managed effectively, further relaxation of social distancing measures could be undertaken without a serious risk of new outbreaks.



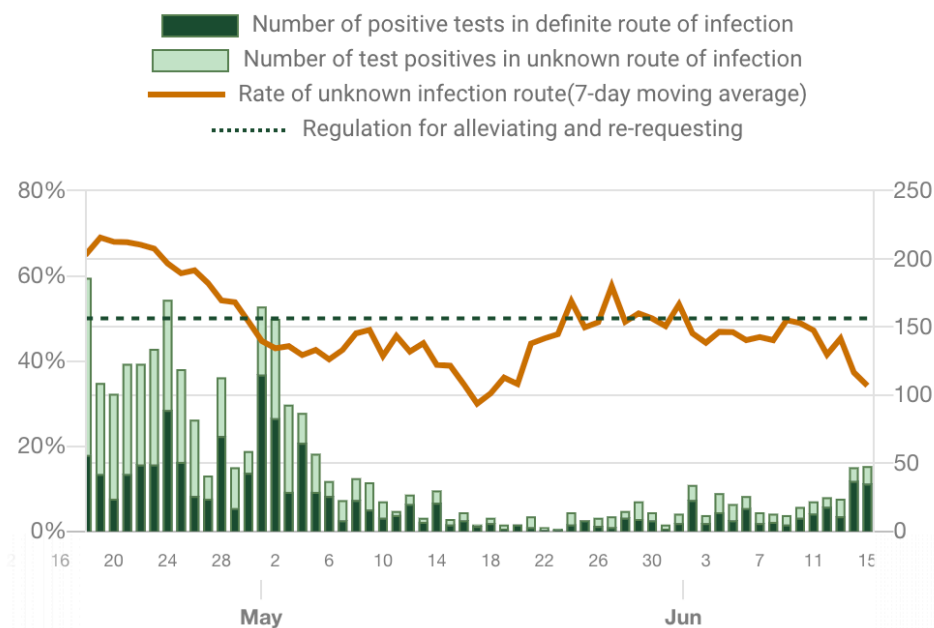
Situation report – COVID19; Japan, Tuesday 16th of June 2020

Current Situation in Tokyo

Unlike most of the rest of Japan, Tokyo is experiencing ongoing clusters of transmission with some evidence of an increase following the end of the state of emergency. Reported cases for the past two days represent the highest numbers recorded in over one month - 47 new infections diagnosed on Sunday the 14th of June and 48 cases yesterday:



A significant proportion of new infections appear to be attributed to spread in nightlife areas of Shinjuku (Kabuki-cho), with 32 of the 47 new infections from Sunday falling into this category. While total cases have risen, a higher proportion of infections are occurring in identified clusters and the number of cases presenting as community spread (no identified source) does not seem to have risen:



Situation report – COVID19; Japan, Tuesday 16th of June 2020

Current situation in Tokyo (continued)

In summary, total case numbers are of some concern. This is one of the criteria under review when determining whether an escalation in response to the outbreak is needed. The other two are the proportion of cases of no detected origin and the state of regional medical infrastructure. As these are not of any immediate concern, Nishimura Yasutoshi, the minister in charge of the government's response to COVID19, has announced that no delay in further easing of restrictions is anticipated. His reported stance is that the increase in case numbers should be seen in a positive light as they represent more extensive testing in the region of the capital responsible for the highest density of infections (Kabuki-cho, Shinjuku).

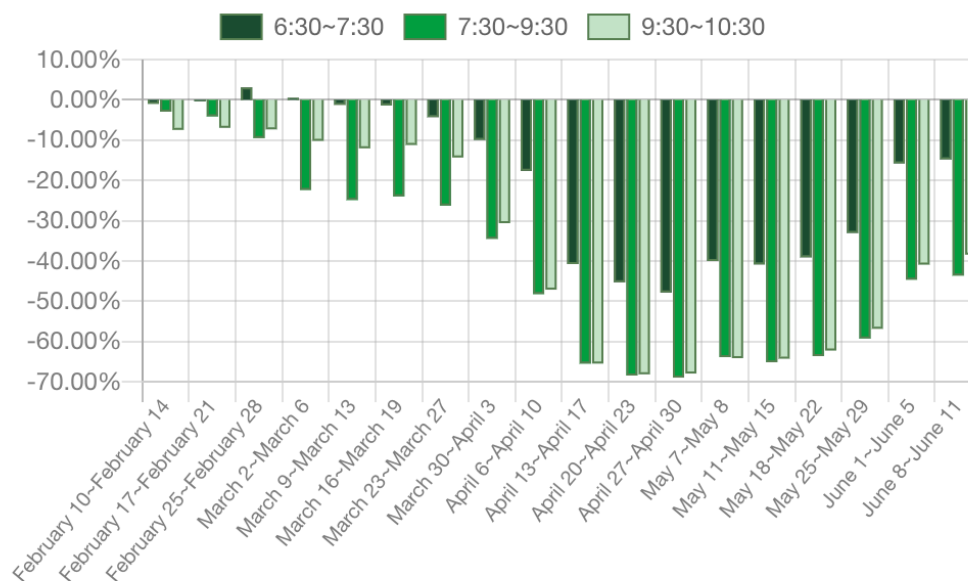
A gradual resumption of economic activity is therefore anticipated and is already underway as evidenced by an increase in peak hour utilization of the transport network, now running at approximately 60% of the anticipated numbers for the season:

Change of Toei subway passengers

Relative figure based on the average number of users from January 20 to 24.

*Total number of passengers passing through the ticket gates of the Toei subway 4 lines

(Note) The number is published as preliminary figures and may be revised as confirmed data at a later date



Situation report – COVID19; Japan, Tuesday 16th of June 2020

References

Reported Caseload Graphs and data sourced from MHLW as reported by Toyo Keizai and the Tokyo metropolitan government –

<https://toyokeizai.net/sp/visual/tko/covid19/en.html>

<https://stopcovid19.metro.tokyo.lg.jp/en/>

Resources

How to get help if you suspect that you have COVID19 (Tokyo residents)

<https://stopcovid19.metro.tokyo.lg.jp/en/flow>